

QUICK HELP GUIDE

- The robot won't start.

1

a **b** **Yes** **No** Check the emergency stop. Ensure that the spoil board is pressing the switch.

Does the start button light up?

Is the light on the angle grinder green?

2

Yes Blinking green Blinking red - Push the green button Constant red light - Error (Go to 2b) **No** Check cables (Go to 2a)

Is there light in the light tower?

a

Check the power plug. Inspect if the pins are bent or pushed in.

b

Is the Wi-Fi connected?

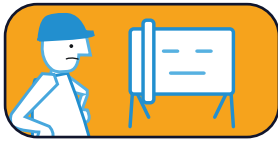
Reset errors in the app

3



Still no response from the robot?

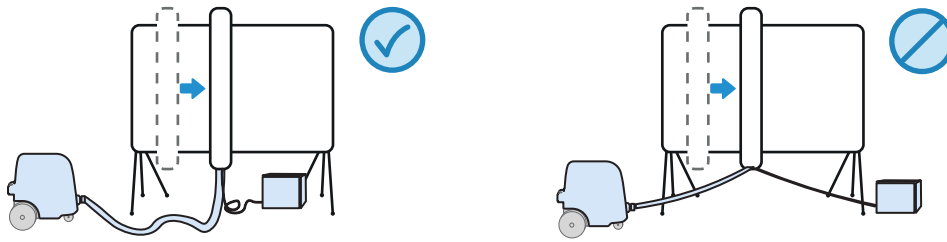
Contact:



QUICK HELP GUIDE

- The robot is cutting unevenly

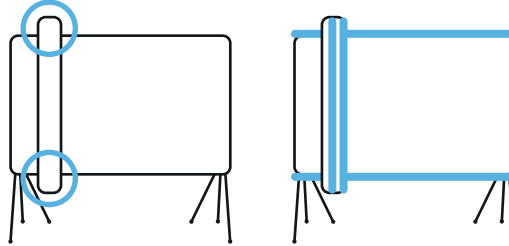
1



Can the vacuum hose and main cable move freely?

2

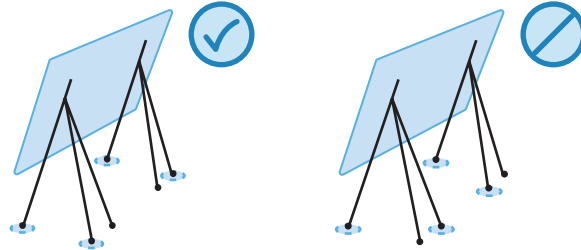
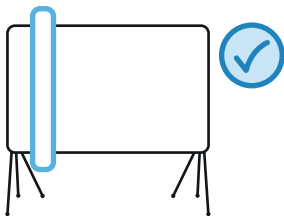
Vacuum:
Sensors
Magnetic strip
Suction hood
Bottom list
Zero point



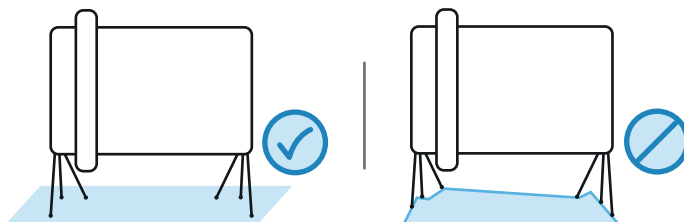
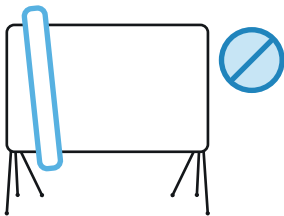
For further information, see the vacuum guide in the app or the manual.

Has the robot been vacuumed?

3



Avoid the robot from leaning on the support leg.

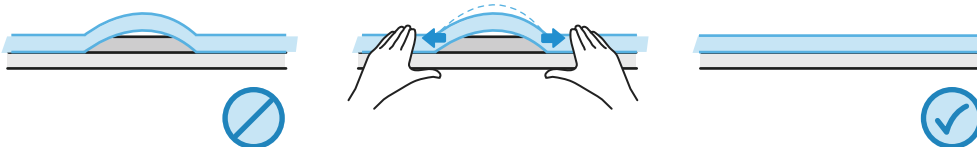


Is the gantry straight and securely fastened?

Is the robot on a flat surface?
Are the legs adjusted correctly?

4

In case of damage to the magnetic tape, please contact KOBOTS service.



Is the magnetic strip free from bulges and damage?

5



Still cutting unevenly?

Contact: